

Durability

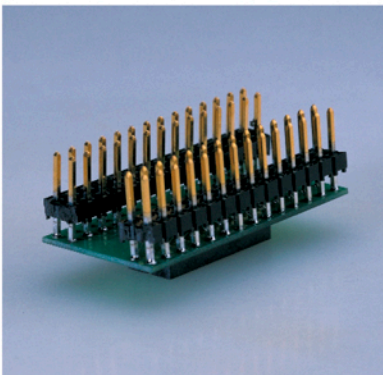
The Delta Probes have been refined and tested to ensure you will have consistent and repeatable connections. Our lab tests have shown that an excess of 1,000 insertions and removals can be performed with no degradation in the reliability of the connection.

Low Electrical Intrusion

Low resistance (<1.0 ohm) and capacitance (<1.5 pf) inherent to the design of the Delta Probe ensures the fidelity of the signals conveyed to your oscilloscope or logic analyzer.

Key Features

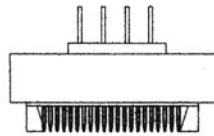
- Snap-on fit
- Redundant connections
- Supports SOP and TSOP packages listed in the table below



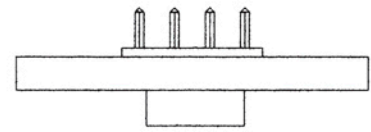
SPECIFICATIONS

Voltages: Both 3.3v and 5v
 Electrical loading on target system:
 capacitance: <1.5 pf, resistance: <1.0 ohm
 Insertions: supports multiple insertions

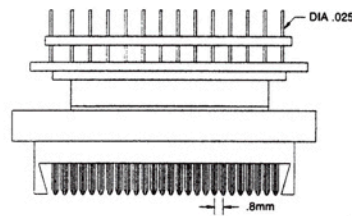
TYPE I SOP



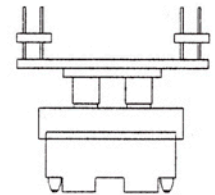
TYPE I
TRANSITION BOARD



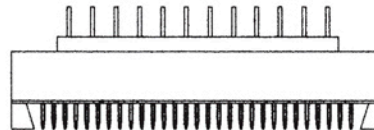
54 PIN TSOP



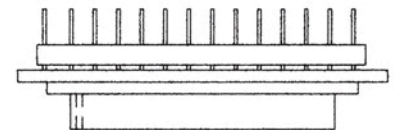
TRANSITION BOARD



TYPE II SOP



TYPE II
TRANSITION BOARD



TYPE I PROBES TSOP; .5mm PITCH

8800-0139	32 Pin w/ 0.050" header
8800-0148	32 Pin w/.100 center Trans. Bd.
8800-0140	40 Pin w/ 0.050" header
8800-0149	40 Pin w/.100 center Trans. Bd.
8800-0141	48 Pin w/ 0.050" header
8800-0150	48 Pin w/.100 center Trans. Bd.
8800-0145	32, 40, & 48 Pin Transition Board

TYPE II; SOP .8mm PITCH

8800-0109	50 Pin w/ 0.050" header
8800-0111	50 Pin w/.100 center Trans. Bd.
8800-0110	54 Pin w/ 0.050" header
8800-0112	54 Pin w/.100 center Trans. Bd.
8800-0091	56 Pin w/o 0.050" header
8800-0151	56 Pin w/.100 center Trans. Bd.
8800-0092	50, 54, & 56 Pin Transition Board

See our website for pinouts and dimensions